



THE DEVELOPMENT OF T-MEGA (Tanjung Manis Economic Growth Area)



OVERVIEW


- 01** Establishment Of Tanjung Manis
- 02** Infrastructure & Facilities In Tanjung Manis
- 03** Industries In Tanjung Manis
- 04** Sosio-economic
- 05** Upcoming Project in T-MEGA
- 06** Development In Tanjung Manis



SCORE AREAS IN SARAWAK



ESTABLISHMENT OF TANJUNG MANIS

 STIDC has been mandated by the Sarawak State Government to develop Tanjung Manis since the year 1990. TANJUNG MANIS started as a Timber Industrial Estate (Processing Zone) in 1990, evolved with the introduction of Deep Sea Fishery Industry, Shipbuilding and Repair Industry, Palm Oil Industry, and the latest; Tanjung Manis Halal Hub where STIDC rebranded it to **Tanjung Manis Economic Growth Area (T-MEGA)**; one of the development area under SCORE.

 **Roles and responsibilities** of STIDC in the development of T-MEGA are as follows:

- 1) Preparation of infrastructure facilities and basic facilities to support T-MEGA industries.
- 2) Preparation of land allocation for T-MEGA industrial purposes to investors in Tanjung Manis.
- 3) To facilitate investment in Tanjung Manis.

TANJUNG MANIS (BEFORE)



1991



1994



1997

TANJUNG MANIS (NOW)



EVOLUTION OF T-MEGA DEVELOPMENT



1990

**TANJUNG MANIS TIMBER
PROCESSING ZONE
(TMTPZ)**



2004

**TANJUNG MANIS DEEP
SEA FISHERY PORT
COMPLEX**



2007

**TANJUNG MANIS SHIP
BUILDING INDUSTRIAL
AREA**



2009

**TANJUNG MANIS
HALAL HUB**



2008

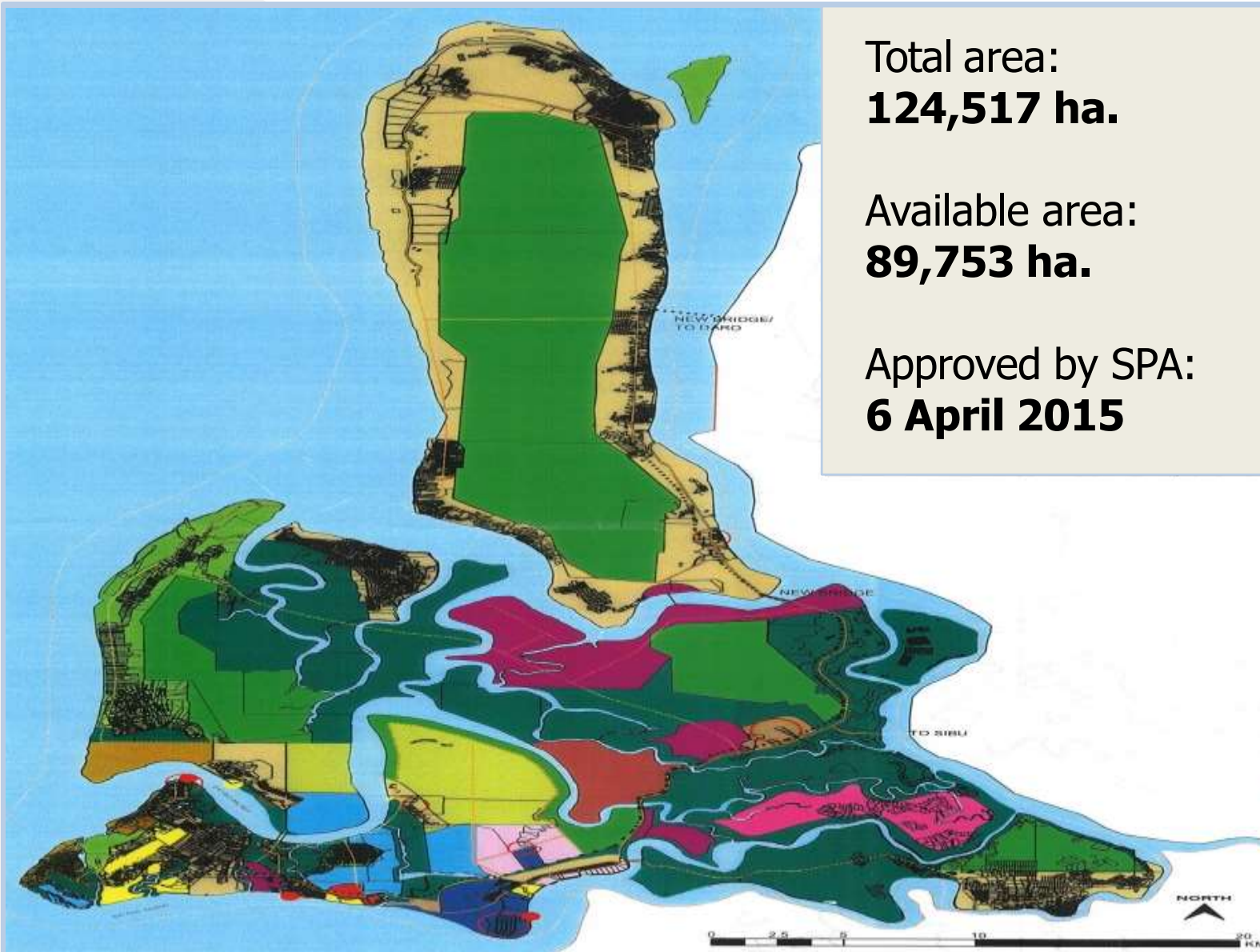
**PALM OIL INDUSTRIAL
CLUSTER (POIC)**



2018

**TANJUNG MANIS
ECONOMIC GROWTH
AREA (T-MEGA)**

T-MEGA MASTERPLAN



Total area:
124,517 ha.

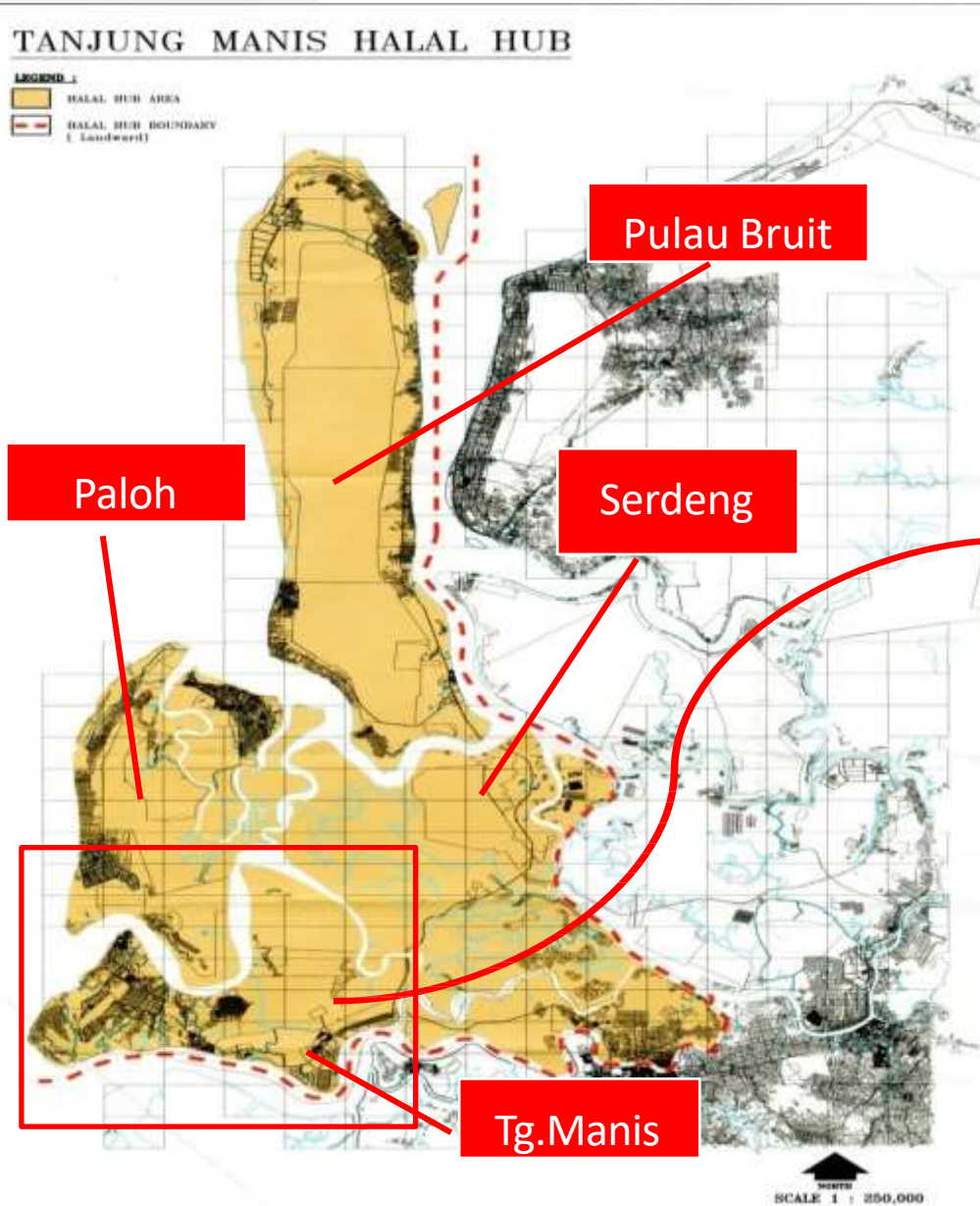
Available area:
89,753 ha.

Approved by SPA:
6 April 2015

T - MEGA MASTERPLAN ZONING

LANDUSE	AREA
 STUDY BOUNDARY	-
 AGRICULTURE PLANTATION	33,433 ha.
 AGRICULTURE FARMING	1,884 ha.
 AGRICULTURE / CEA	4,026 ha.
 AQUACULTURE	2,536 ha.
 HEAVY INDUSTRY	6,254 ha.
 LIGHT AND MEDIUM INDUSTRY	1,347 ha.
 FUTURE INDUSTRY	2,604 ha.
 HIGH DENSITY RESIDENTIAL	583 ha.
 LOW / MEDIUM DENSITY RESIDENTIAL	3,026 ha.
 FOREST / MANGROVE RESERVE	23,190 ha.
 PARK AND RECREATIONAL	6,122 ha.
 TOURISM	1,722 ha.
 COMMERCIAL / MIXED DEVELOPMENT	1,511 ha.
 GOVERNMENT RESERVE	177 ha.
 AIRPORT AND PORT	1,411 ha.
 EXISTING ROAD	-
 PROPOSED ROAD	-
 WATER BODIES	-
 SERVICE CENTRE	-
 PROPOSED RAILWAY RESERVE	-
 EXISTING WHARF / JETTY	-
 PROPOSED WHARF / JETTY	-

TANJUNG MANIS HALAL HUB



Tanjung Manis New Township (Gazetted 24th August 1994)
: 3,000 hectares

Tanjung Manis Halal Hub Phase 1
: 16,000 hectares



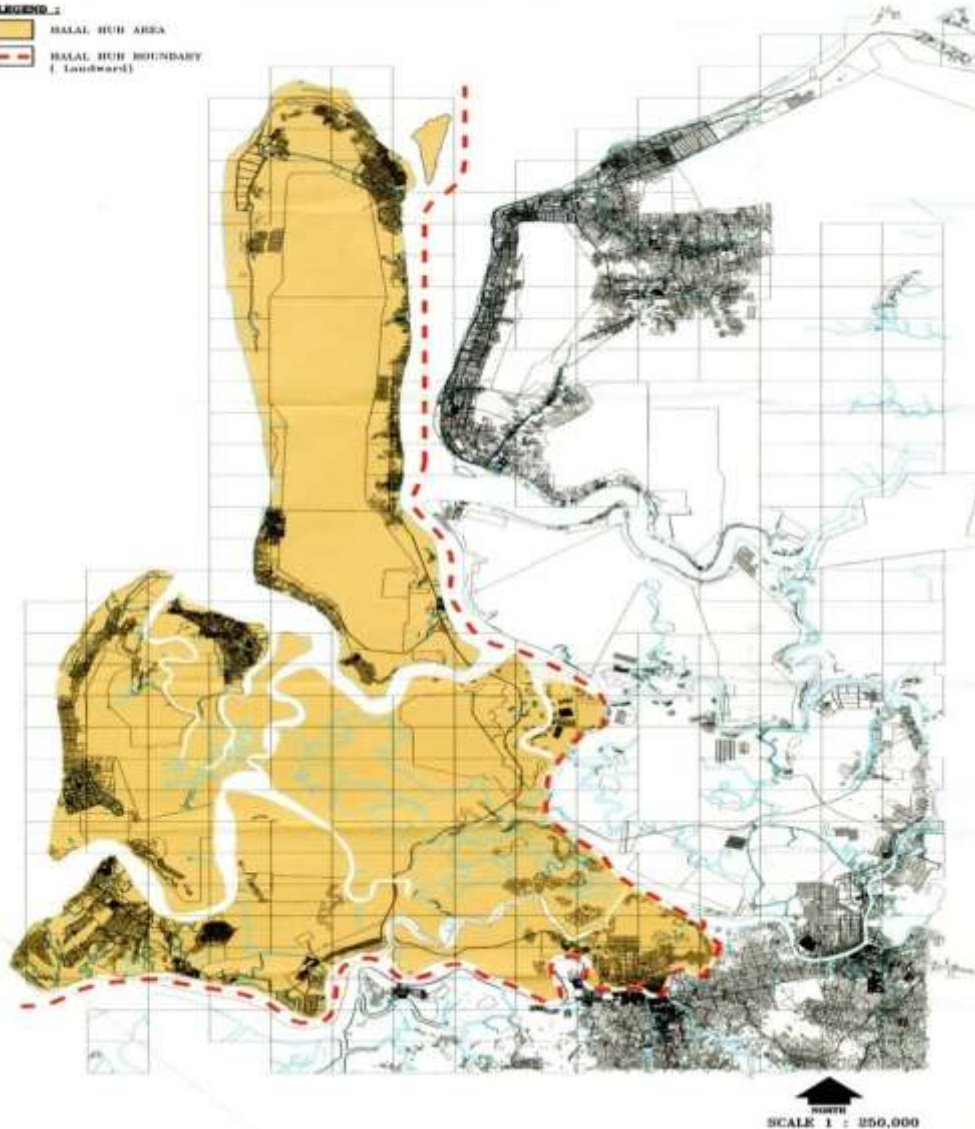
TANJUNG MANIS HALAL HUB MASTERPLAN

HALMAS (HALAL MALAYSIA) STATUS

TANJUNG MANIS HALAL HUB

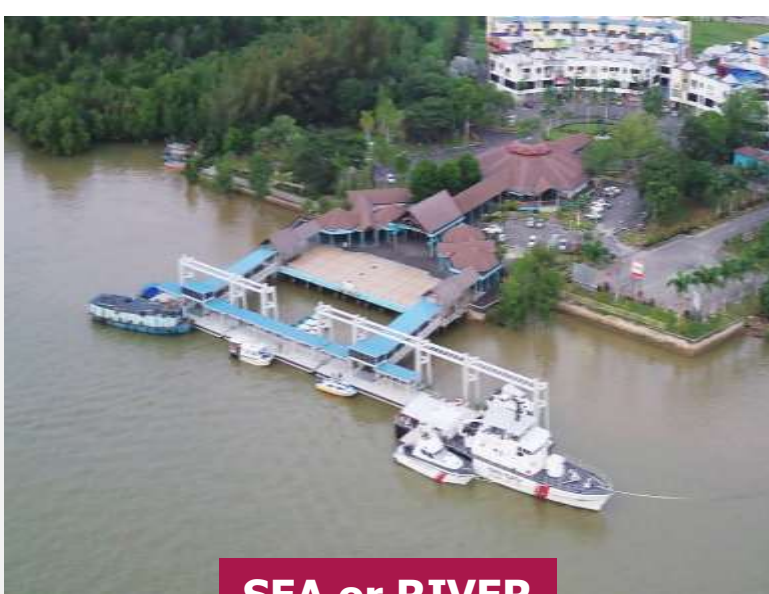
LEGEND :

- HALAL HUB AREA
- HALAL HUB BOUNDARY (landward)



- Declared as Halal Malaysia (HALMAS) area by Halal Industry Development Corporation on 10 December 2010

MODE OF TRANSPORTATION



SEA or RIVER



AIRPLANE



ROAD



An aerial photograph of an industrial facility, likely a palm oil mill, situated on a peninsula or island. The facility features several large, long industrial buildings with light-colored roofs, surrounded by greenery and some smaller structures. The land is bordered by a body of water, and the background shows a dense forested area under a hazy sky.

INFRASTRUCTURE & FACILITIES IN TANJUNG MANIS

INFRASTRUCTURE

1. Water Treatment Plan



Telecommunication & Internet



2. Electricity (132Kv Substation)



3. Raw Water Reservoir



Raw & Treated Water Pipeline



4. High Level Water Tank



SUPPORTING FACILITIES



School



Government Sub-Centre



HDC Housing



Administrative Centre



Police Station & Fire Station



Commercial Centre



STIDC Housing



Clinic



Mosque

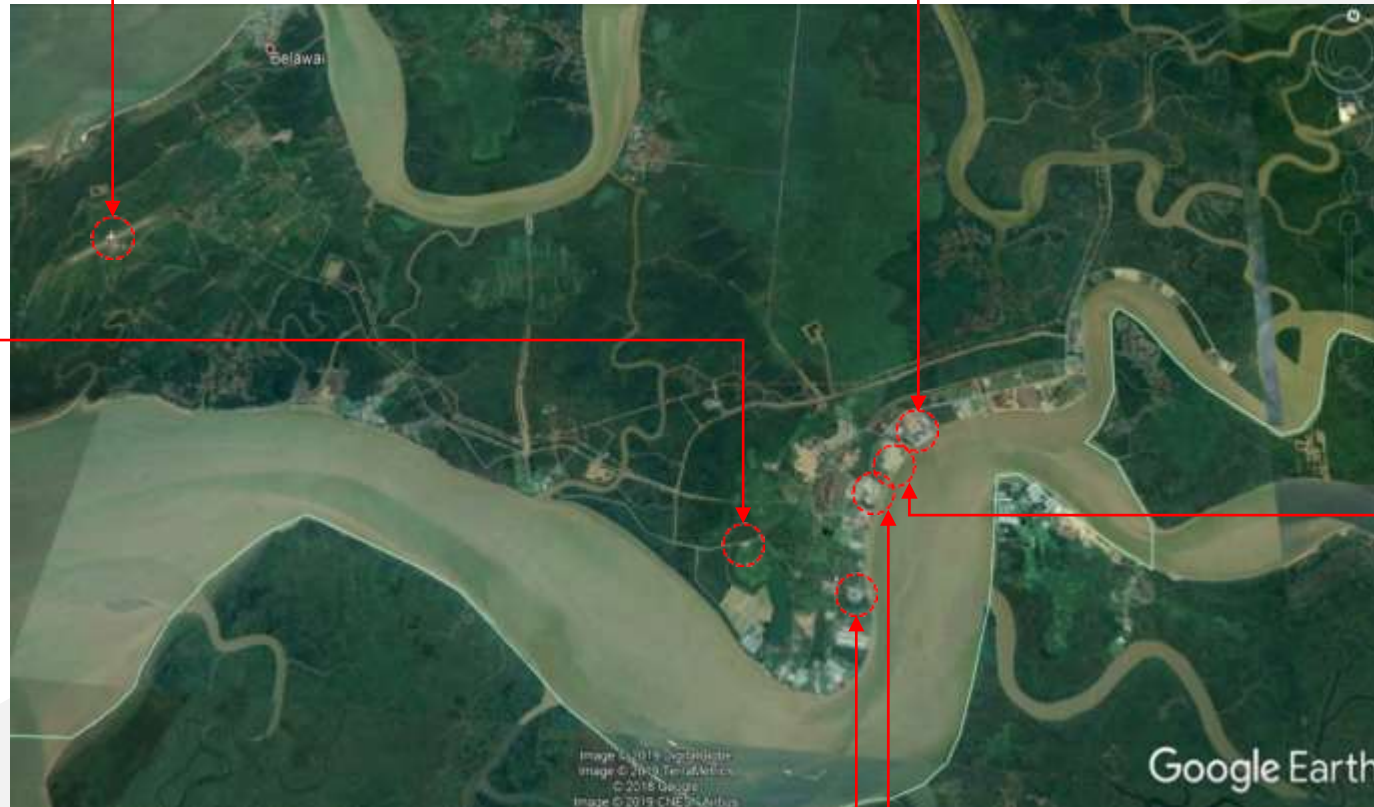


Commercial Centre & 200 units Govt. Quarters

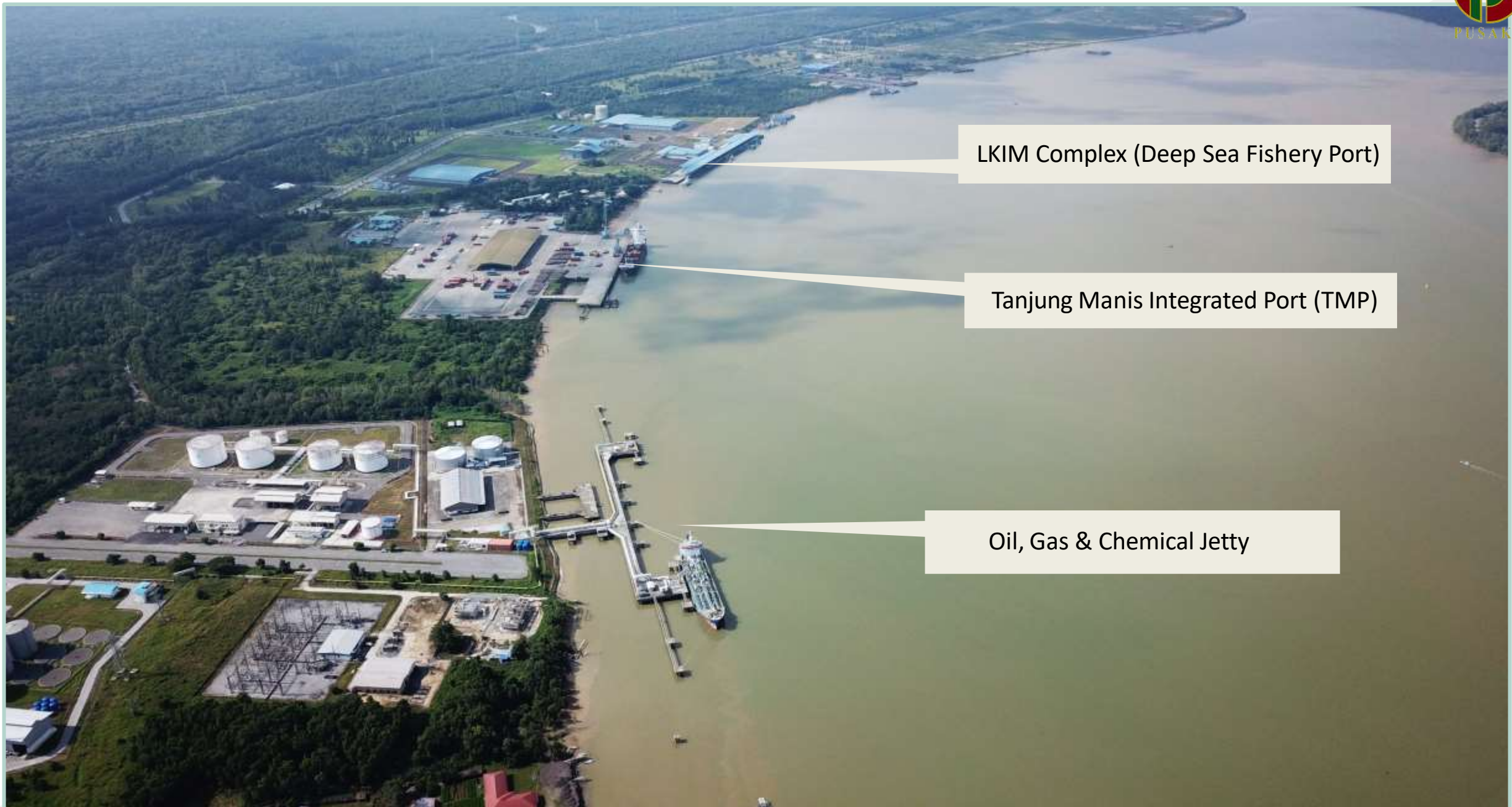




PUSAKA



PORT & JETTY FACILITIES



LKIM Complex (Deep Sea Fishery Port)

Tanjung Manis Integrated Port (TMP)

Oil, Gas & Chemical Jetty



[] LOCALITY

- 20 km from Tanjung Manis, Mukah 111° 30`` East Longitude and 2° 10`` North Latitude
- 50 km from West Sarikei and 150 km from South West of Sibul

[] PROJECT SUMMARY

- Area of 500 acres
- Runway 1,500m x 30m (210 acres)

[] AIRCRAFT

- Code 2B Airport (STOLPort) – for Twin Otter only
- Proposed to be upgraded for ATR
- Proposed to have refueling facilities

[] OPERATION

- MASwings (1st April 2008 – Present) – Daily flights
- KCH / TGC @ 08:45 am
- TGC / KCH @ 09:25 am

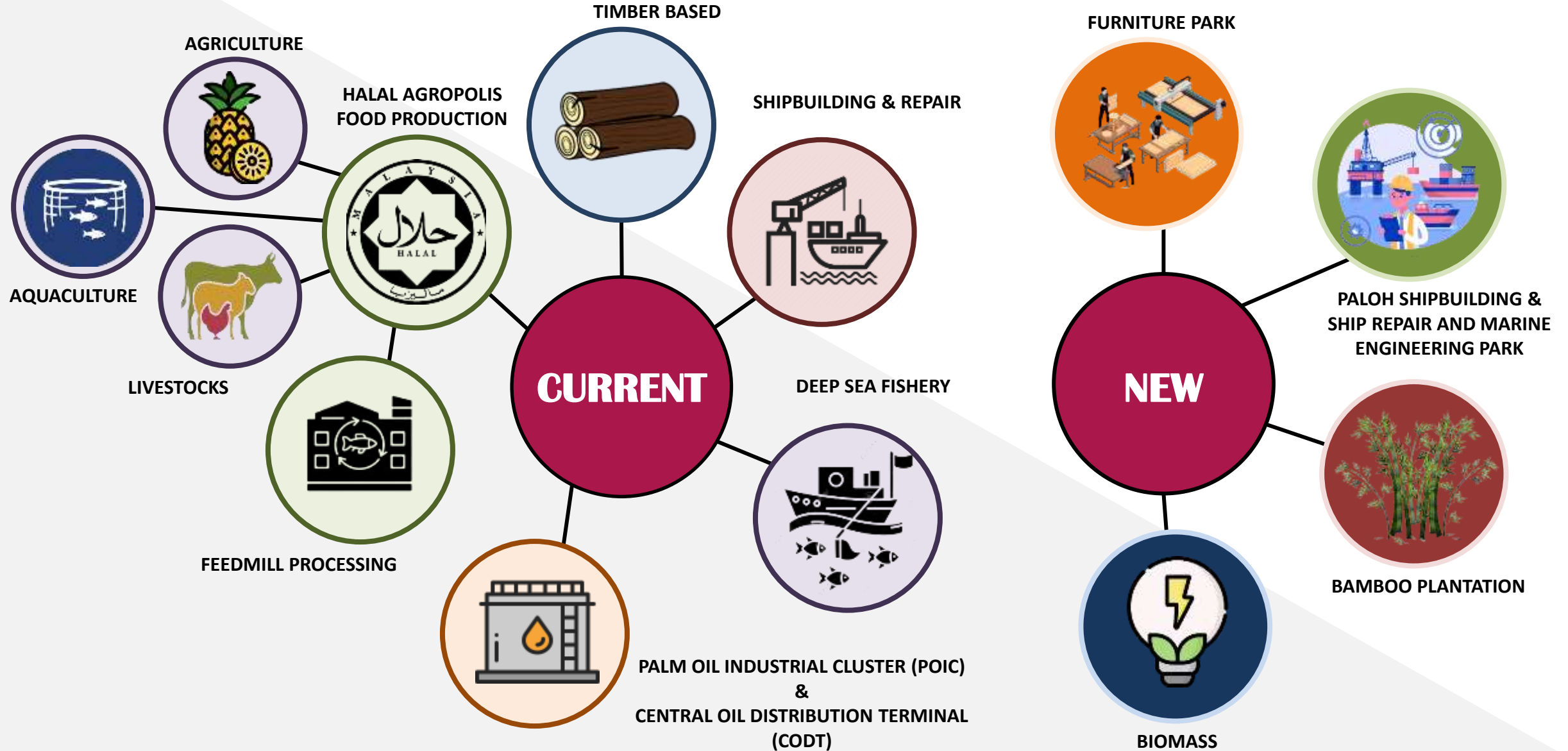
DEEP SEA FISHERY PORT (LKIM COMPLEX)



An aerial photograph of an industrial zone in Tanjung Manis, Malaysia. The image shows several large industrial buildings with white and grey roofs, surrounded by greenery and a body of water. The text "INDUSTRIES IN TANJUNG MANIS" is overlaid in the center.

INDUSTRIES IN TANJUNG MANIS

INDUSTRIES IN TANJUNG MANIS



TIMBER BASED INDUSTRY



SHIPBUILDING INDUSTRY



LOT 657



LOT 659



POIC & CODT



FEEDMILL PROCESSING INDUSTRY



AGRICULTURE AREA - 12KM ROAD (4,000 ha)

Zone II (± 687 ha)

Long-term land lease for agri-business

Zone III (± 507 ha)

Tanjung Manis Agropolis (also known as Smallholders' Development Project)

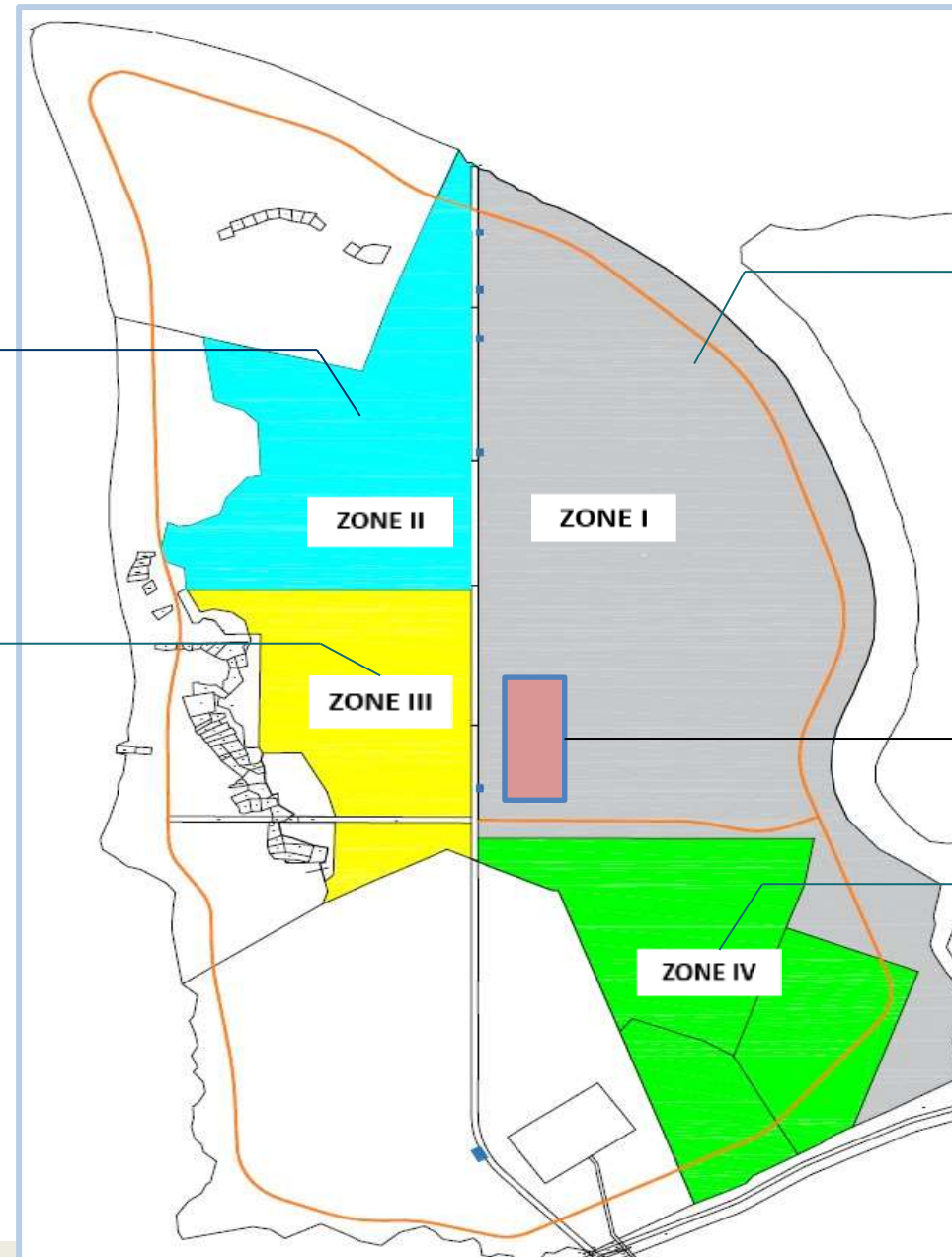
Zone I ($\pm 2,207$ ha)

Joint Development with Private Sector

Pineapple Cultivation Project

Zone IV (± 803 ha)

Mixed development



AGRICULTURE AREA



12KM ROAD



PART OF LOT 42



PART OF LOT 50 - 116



AQUACULTURE AREA



An aerial photograph of an industrial area, likely a port or manufacturing hub, featuring several large, long industrial buildings with light-colored roofs. The area is surrounded by dense green forest and is situated near a body of water. A semi-transparent blue rectangular overlay is positioned in the center of the image, containing the text 'SOSIO-ECONOMIC' in bold, black, sans-serif capital letters.

SOSIO-ECONOMIC

1. CONTRACT FARMING

2. AGRO-BASED DEVELOPMENT & INDUSTRY

Chili Plantation



Pineapple Plantation



Bamboo Nursery



Kelulut Honey

3. ENTREPRENEURIAL OPPORTUNITIES, HANDICRAFTS, RESTAURANTS AND OTHERS

Supermarket



Laundry Station



Teahouse



Handicraft



AgroBank



4. ECO-TOURISM



BEACH AND RESORT



4. ECO-TOURISM



FISHING COMPETITION



An aerial photograph of an industrial area in Tanjung Manis, Malaysia. The image shows several large industrial buildings with white and grey roofs, surrounded by greenery and a body of water. The text "DEVELOPMENT IN TANJUNG MANIS" is overlaid in the center.

DEVELOPMENT IN TANJUNG MANIS

SARAWAK GOVERNMENT ADMINISTRATIVE CENTER (TANJUNG MANIS DISTRICT) (16-STOREY)



BAMBOO PROJECT FOR CENTRAL REGION

Bamboo Nursery (Tanjung Manis)



Bamboo Nurseries or Trial Plot –
to supply seedling to 10,000
hectares

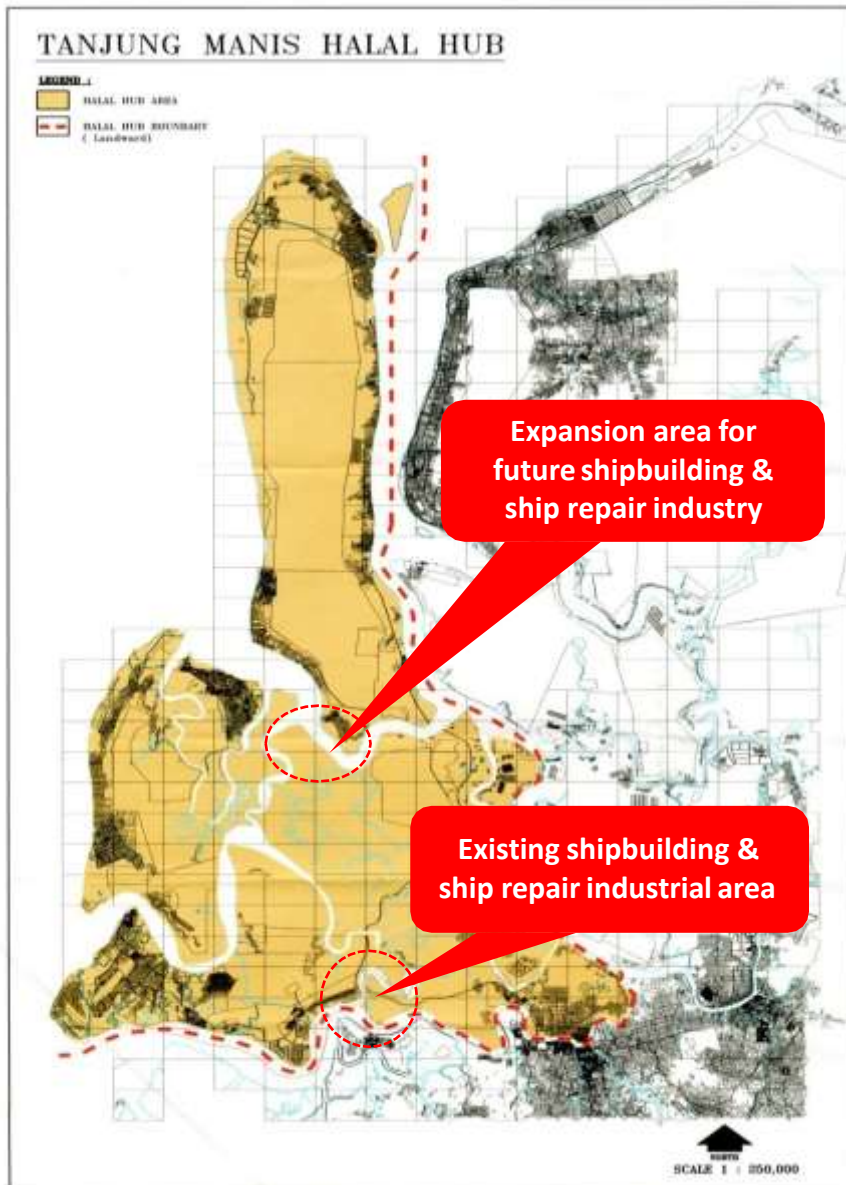
To be located at Niah Miri,
Bintulu, Lawas, Kuching &
Tanjung Manis



PROPOSED FURNITURE PARK IN TANJUNG MANIS



PALOH SHIPBUILDING & SHIP REPAIR AND MARINE ENGINEERING PARK



OTHER FUTURE PLANS



HOSPITAL



HYPERMARKET



RESORT



GOLF COURSE



RECREATIONAL



INTERNATIONAL SCHOOL



PARKS



HOUSING

SELAMAT DATANG
KE PUSAKA
SARAWAK TIMBER INDUSTRY DEVELOPMENT CORPORATION
BANDAR BARU TANJUNG MANIS

THANK YOU

OUR CONTACT



+6082-473 000 / 473 261



+6082-442 691 / 473 066



tmega@pusaka.gov.my /
stidc@pusaka.gov.my



www.sarawaktimber.gov.my

